

# ROTARY KOATER



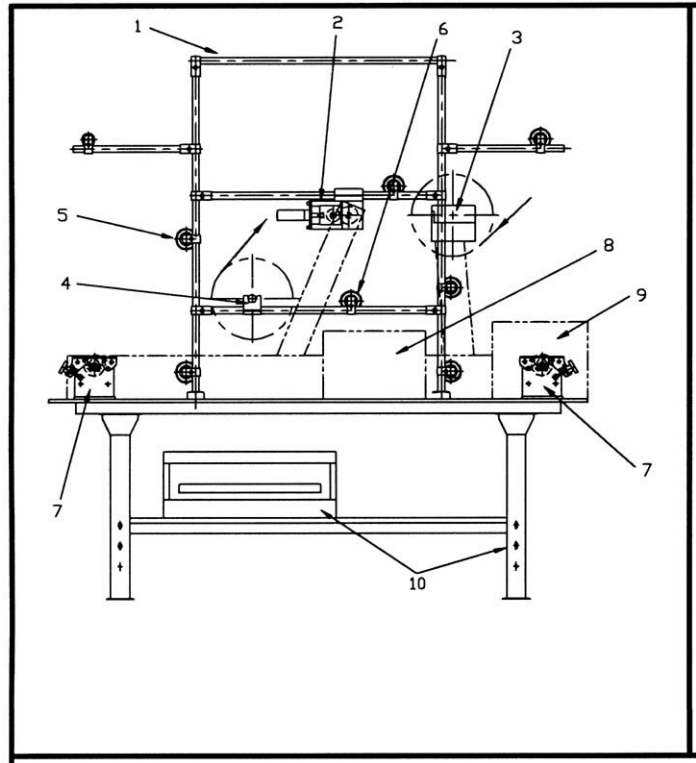
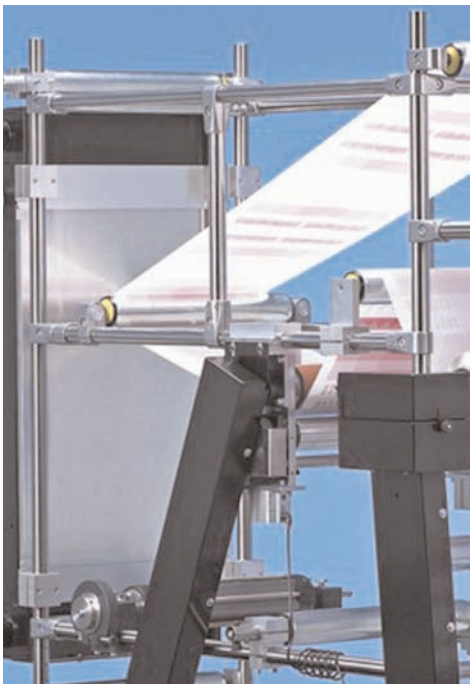
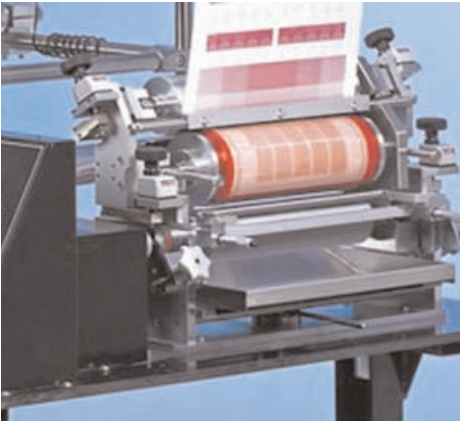
Designed to print, coat or laminate nearly all types of flexible substrates (such as papers, films and metallic foils) on a reel-to-reel basis, this machine is versatile, providing a choice of the basic unit, individual printing or coating techniques, drying equipment or other accessories. It is particularly useful for R&D, quality control and small-scale production of specialized products. All materials used are easily cleaned and resistant to solvents.

## *Rotary coater, printer and laminator*

### **Features**

- Versatile and easy to install
- Coating and printing systems easily interchangeable
- Offers hot air, infrared and ultraviolet drying/curing
- Web widths up to 30.5cm available, with a speed range of .4-100 meters per minute

## Basic Unit



### *The basic unit consists of:*

1. Tubular stainless steel frame
2. Pneumatic laminating or pull-off station
3. Pneumatic rewind station (reversible rotation)
4. Unwind station with manual brake
5. Idler rollers with nominal 50mm diameter
6. Web speed display (meters per minute)
7. Mounting stations for coating/printing heads
8. Variable-speed AC motor
9. Control console
10. Bench assembly with accessory drawer

## Optional Equipment



### Drying/Curing Systems

#### Hot Air Impingement Dryers

Electrically heated with temperatures ranging up to 200°C

#### Drum-Drying Unit

Teflon-sleeved drums provide thermostatically controlled temperatures of up to 150°C

#### Infrared

Infrared drying systems

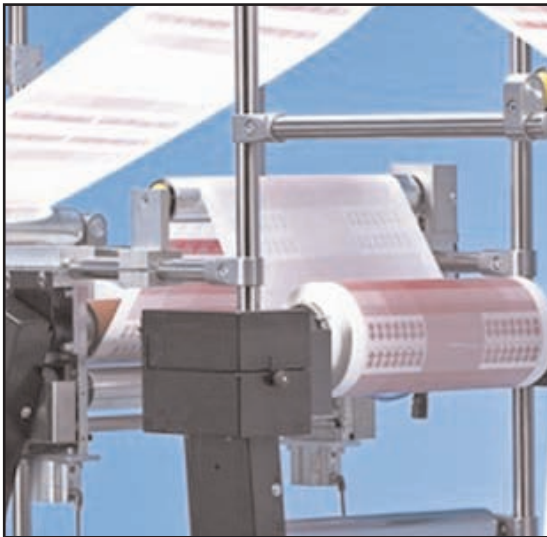
#### Ultraviolet

Drying systems which may be mounted in any position on the machine

### Chill/Heated/Spreader Rollers

### Corona Treater

### Other Printing and Coating Techniques

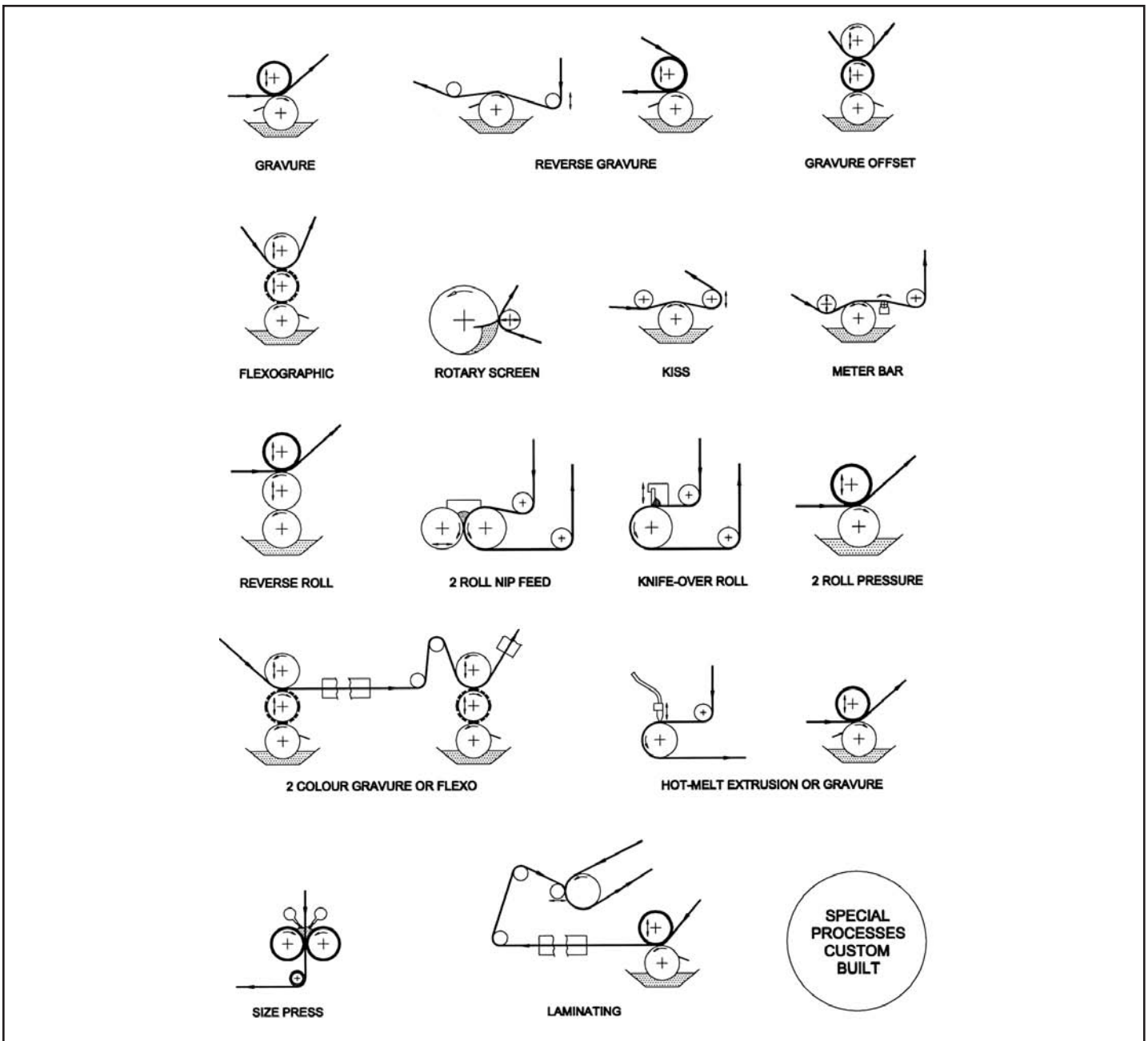


### Specifications

- Electric or air drive (safe for hazardous areas)
- From 200 Kg.
- Footprint from 2 x 1m
- Power supply: operation at 200/250 or 100/120V, 50 or 60Hz, or compressed air

## Rotary Coater Printing and Coating Techniques

A selection of the available standard printing/coating processes is shown below. Customized equipment can also be quickly designed and built to meet specific requirements.



### Versatile Converting Machine (VCM-300)

An alternative to the Rotary Koater is the Versatile Converting Machine, built using the same concepts as the Rotary Koater: an open framework on which various assemblies can be fitted. Unlike the Rotary Koater where there are certain standard design constraints, the VCM-300 is custom-designed and -manufactured, allowing either simple, single processes or more complex configurations using multiple coating stations.

Brand and product names are trademarks of their respective holders. All trademarks may be registered in the U.S.A. and/or other countries. Product design and specifications subject to change without prior notice.

Los productos están protegidos por patentes y patentes pendientes en los EE.UU. y el extranjero, y son marcas registradas y propiedad de sus fabricantes. Las especificaciones y el diseño están sujetos a cambio sin previo aviso.

Grafitec International Inc., 2684 N.W. 97 Avenue, Miami, FL 33172, Tel: 305/718-9941, Fax: 305/718-9362  
E-mail: [grafitec@grafitec.com](mailto:grafitec@grafitec.com), Internet: [www.grafitec.com](http://www.grafitec.com)