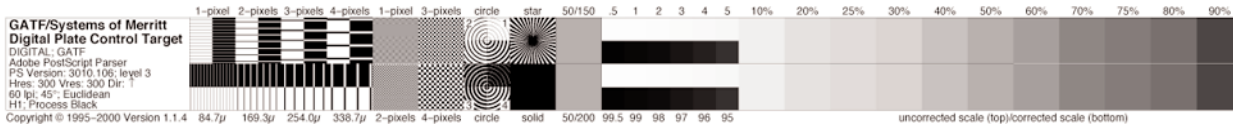


# PLATE CONTROL TARGETS

## Benefits of Using Plate Control Targets

Improve consistency in the exposure of printing plates and other materials • Provide measurements of exposure level, resolution and dot gain • Indicate problems of halation or non-uniform imaging

### Digital Plate Control Target



#### The Digital Plate Control Target consists of:

- Dialog box that reports variable information from the RIP
- Horizontal and vertical microlines in negative and positive patches
- 1-, 2-, 3- and 4-pixel checkerboard patches
- PIA/GATF Star Targets

- Negative and positive curved micro-lines
- Solid patch
- 50% reference tint patches at 150 and 200 lpi
- Highlight and shadow tints (corrected and uncorrected)
- Tone scales (corrected and uncorrected)

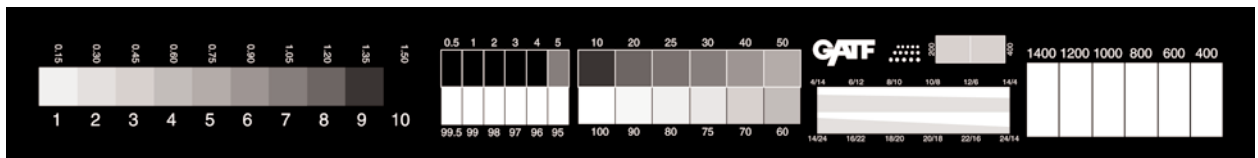
#### It allows measurement of:

- Exposure
- Pixel resolution
- Directional effects
- Reproduction characteristics
- Minimum and maximum dot sizes

**Size** .55x6.5"/13.9x164mm

**Reference** 7120D (includes CD with both Macintosh and PC formats)

### UGRA Film-Based Plate Control Target



#### The UGRA Plate Control Target consists of five elements:

- Calibrated continuous-tone wedge (13 steps at .15 density increments)
- Calibrated halftone wedge which contains patches (150 lines per inch/59 lines per centimeter)

- Microline resolution target (12 circular patches with positive/negative halves)
- Doubling/slur targets
- Positive/negative highlight and shadow dot control patches

**Size** .56x6.43"/14.3x163.5mm

**Reference** 7080

### Stouffer 21 Step Transmission Sensitivity Guide



#### Stouffer 21 Step Transmission Sensitivity Guide

This guide is considered "the platemaker's choice." It serves as a gauge to evaluate the variables encountered in the exposure and processing of lithographic plates and photographic materials by contact. It is also used with contact positives, silk screen, printed circuit boards and most other photographic applications for judging results and determining the speed and contrast of emulsions and the hardness of coatings.

**Size** .5x5"/12.7x127mm

**Reference** T2115