

WATERGUARD PLUS WATERPROOF FLUORESCENT FIXTURES

WaterGuard® Plus Is Built to Last

WaterGuard® Plus is a complete lighting system encapsulated with non-metallic waterproofed parts and with built-in electrical components. Units are equipped with a mirror-like reflector for optimum light output and with safety-coated lamps that will contain all the shards in the event of breakage. The casing is manufactured from XYLEX 8300 HP, an innovative, tough and resistant polycarbonate and polyester material that is able to withstand wash-downs up to 1200 PSI; it will not yellow with age nor become brittle and crack when exposed to heat or UV rays from the sun. These units will provide you with many years of service without leakage. For operation at 20-180°F/-7 to 82°C, they are IP67 rated, UL listed 1598 and UL-EPH certified. The limited one-year warranty includes the lamp.



Some of Many Applications

Use this unique watertight lighting for indoor and outdoor applications in wet and corrosive areas, including product inspection, food plants, supermarket produce misting areas, amusement parks, car washes, parking garages, food processing areas, seacoast areas, tunnels, greenhouses, outdoor signage, water treatment plants, bridges, decorative outdoor lighting and bathrooms.



Color Options

WaterGuard Plus will be supplied with a clear tubeguard unless one of these colors is specified.

WGP50 Lighting System with One T5 Fluorescent Lamp

Single T5 safety-coated fluorescent lamp fixture • High-frequency electronic ballast with universal voltage, 120-277V/50-60Hz • Factory prewired with 8-foot/2.44m cord • Standard fixture includes 5000 Kelvin fluorescent lamp; 3000, 3500, 4100, and 6500°K lamps available upon request • Optional suspension mounting methods available at additional cost • Cleans easily with mild soap and water (do not use industrial cleaners nor solvents) • Not recommended for permanent immersion

Lighting System with Diameter of 2"/50mm			
Length	Reference	Description	Voltage
1 foot	WGP511	8 Watt, Miniature Bi-Pin Lamp Length: 12"/31cm Fixture Length: 14"/36cm	120V/60Hz
2 feet	WGP512	14 Watt, Miniature Bi-Pin Lamp Length: 22"/56cm Fixture Length: 25"/63cm	120V/60Hz 240V/50Hz 277V/60Hz
3 feet	WGP513	21 Watt, Miniature Bi-Pin Lamp Length: 34"/86cm Fixture Length: 37"/94cm	120V/60Hz 240V/50Hz 277V/60Hz
4 feet	WGP514	28 Watt, Miniature Bi-Pin Lamp Length: 46"/117cm Fixture Length: 49"/124cm	120V/60Hz 240V/50Hz 277V/60Hz
5 feet	WGP515	35 Watt, Miniature Bi-Pin Lamp Length: 58"/147cm Fixture Length: 61"/154cm	120V/60Hz 240V/50Hz 277V/60Hz

Mounting Clips Each fixture includes two non-metallic mounting brackets.



Mounting Clip



WaterGuard Plus Waterproof Fluorescent Fixtures

WGP70 Lighting System with One T8 Fluorescent Lamp

Includes all the features of the WGP50 series but with a single T8 safety-coated lamp.

Lighting System with Diameter of 2.75"/70mm			
Length	Reference	Description	Voltage
2 feet	WGP712	17 Watt, Medium Bi-Pin Lamp Length: 24"/61cm Fixture Length: 28"/71cm	120V/60Hz 240V/50Hz 277V/60Hz
3 feet	WGP713	25 Watt, Medium Bi-Pin Lamp Length: 36"/91cm Fixture Length: 40"/101cm	120V/60Hz 240V/50Hz 277V/60Hz
4 feet	WGP714	32 Watt, Medium Bi-Pin Lamp Length: 48"/122cm Fixture Length: 52"/132cm	120V/60Hz 240V/50Hz 277V/60Hz
5 feet	WGP715	40 Watt, Medium Bi-Pin Lamp Length: 60"/152cm Fixture Length: 64"/162cm	120V/60Hz 240V/50Hz 277V/60Hz



WGP70 Lighting System with Two or Four T5 Fluorescent Lamps

Includes all the features of the WGP50 series but available with two or four T5 safety-coated lamps for optimum light output.

Lighting System with Diameter of 2.75"/70mm			
Length	Reference	Description	Voltage
2 feet 2 lamps	WGP722	14 Watt, Miniature Bi-Pin Lamp Length: 22"/56cm Fixture Length: 28"/71cm	120V/60Hz 240V/50Hz 277V/60Hz
3 feet 2 lamps	WGP723	21 Watt, Miniature Bi-Pin Lamp Length: 34"/86cm Fixture Length: 40"/101cm	120V/60Hz 240V/50Hz 277V/60Hz
4 feet 2 lamps	WGP724	28 Watt, Miniature Bi-Pin Lamp Length: 46"/117cm Fixture Length: 52"/132cm	120V/60Hz 240V/50Hz 277V/60Hz
5 feet 2 lamps	WGP725	35 Watt, Miniature Bi-Pin Lamp Length: 58"/147cm Fixture Length: 64"/162cm	120V/60Hz 240V/50Hz 277V/60Hz



Lighting System with Diameter of 2.75"/70mm			
Length	Reference	Description	Voltage
8 feet 4 lamps	WGP748	28 Watt, Miniature Bi-Pin Lamp Length: 46"/117cm Fixture Length: 96"/244cm	120V/60Hz 240V/50Hz 277V/60Hz

Optional Suspension Mounting Methods

Stainless Steel Hangers

Gripper hangers paired with an EncapSulite WaterGuardPlus fixture offer the ideal solution to suspension mounting in the food industry. These stainless steel hangers are designed specifically for applications in wet locations and washdown areas.

WaterGuard/Griple Mounting Sets

The WaterGuard/Griple mounting set includes two cables with snap hook ends, two locks and two stainless steel straps with accompanying hardware.

Reference	Length
Grip-5	5 feet/1.52m
Grip-10	10 feet/3.05m
Grip-15	15 feet/4.57m

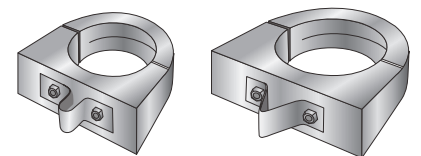
WGP748 Mounting Set

The 8-foot/2.44m fixture requires a WaterGuard/Griple mounting set that includes three cables with snap hook ends, three locks, stainless steel straps and hardware.

Reference	Length
Grip-748-5	5 feet/1.52m
Grip-748-10	10 feet/3.05m
Grip-748-15	15 feet/4.57m

Stainless Steel Hanging Clamps

Available for attaching to the mounting bracket for optional suspension mounting (the chain is not included).



Brand and product names are trademarks of their respective holders. All trademarks may be registered in the U.S.A. and/or other countries. Product design and specifications subject to change without prior notice.

Los productos están protegidos por patentes y patentes pendientes en los EE.UU. y el extranjero, y son marcas registradas y propiedad de sus fabricantes. Las especificaciones y el diseño están sujetos a cambio sin previo aviso.

Grafitec International Inc. Tel: 305/718-9941 Fax: 305/718-9362

E-mail: grafitec@grafitec.com Internet: www.grafitec.com